



# Tingla Hub – New Khimti – Sunkoshi – Dhalkebar 400 KV Transmission Line Project



## Background

The Tingla Hub – New Khimti – Sunkoshi Hub – Dhalkebar 400 kV Transmission Line and associated Substation Project spans across several districts in Nepal, including Solukhumbu, Okhaldhunga, Ramechhap, Dolakha, Sindhuli, and Dhanusha districts. It involves the construction of four substations: bay extensions at Tingla Hub, New Khimti, and Dhalkebar substations, along with the establishment of a newly proposed Sunkoshi Hub substation.

### LOT 1:

Tingla Hub – New Khimti – Sunkoshi – Dhalkebar 400 kV Transmission

### LOT 2:

Bay extension at Tingla Hub, New Khimti and Dhalkebar substations and newly proposed Sunkoshi Hub substation



#### Location:

Solukhumbu, Sindhuli  
Okhaldhunga,  
Ramechhap, Dolakha  
and Dhanusha Districts



#### Land Required:

740.24 hectares



**Sector:**  
Energy



#### Location:

New Khimti,  
Sunkoshi



#### Land Required:

7.63 hectares

### Objectives

This project aims to enhance the efficient transmission of electricity, improve line voltage, and reduce technical grid losses, thereby ensuring sustainable economic development and reliable power evacuation.

Tingla Hub, New Khimti and Dhalkebar substations bay extension will be carried out while Sunkoshi hub substation will be constructed.

### Salient Feature:

- Length: 133.99 Km
- Number of Circuits: 2 (Double)
- Nominal Span: 400 m
- Conductor: ACSR "Quad Moose"
- No. of Towers: 385
- Starting Point: Tingla Substation
- Ending Point: Dhalkebar Substation
- 400 kV (GIS) and 132 kV (AIS)
- Gas Insulated Switchgear
- Outdoor equipment
- Indoor Equipment
- Earthing, lightning protection

## Project Outcome



Encourage power producers to invest in this corridor for hydroelectricity generation.



Improved reliability and quality (Voltage/Frequency) of power supply



Reduced transmission and distribution loss



Job creation and economic development

# Financial Indicators



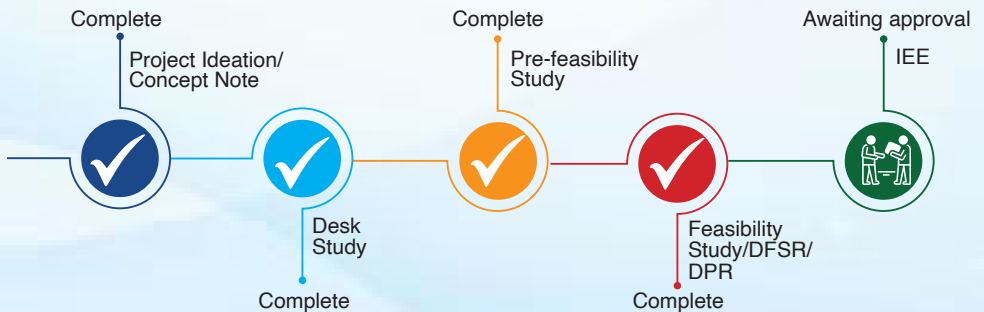
# Financing Requirements

## Project Seeking Finance

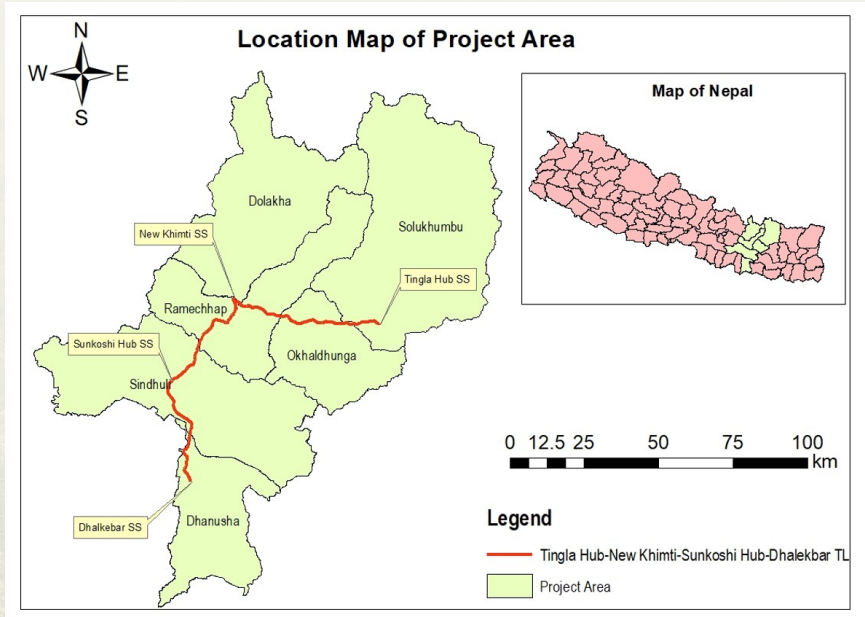
Project Financing Plan		
Source	Amount (Million USD)	Share of Total (%)
Equity (GoN and NEA)	45.75	20.00%
Remaining for Lending	183	80.00%

Seeking lenders to finance 80% of the total project cost as a debt.

# Project Implementation Timeline



# Project Layout



## Relevant Agencies

- Ministry of Energy, Water Resource and Irrigation (MoEWRI)
- Nepal Electricity Authority (NEA)

## About the Agency

### Nepal Electricity Authority (NEA):

The Nepal Electricity Authority (NEA) is Nepal's government-owned utility overseeing electricity generation, transmission, distribution, and sales. It aims to provide reliable, affordable, and sustainable energy solutions, fostering national development and enhancing citizens' lives. Its mission is to ensure reliable electricity supply, promote renewables, and maintain environmental sustainability. Its objectives include expanding access, improving infrastructure, promoting renewables, driving economic growth, ensuring equitable distribution, and fostering transparent operations. It is pivotal in Nepal's energy sector for sustainable development.

Website: [nea.org.np](http://nea.org.np)

Phone no.: +977-1-4153051, +977-1-6618170, 9851126700

Email: [info@nea.org.np](mailto:info@nea.org.np), [atksd400kv@nea.org.np](mailto:atksd400kv@nea.org.np), [atksd400kv@gmail.com](mailto:atksd400kv@gmail.com)

